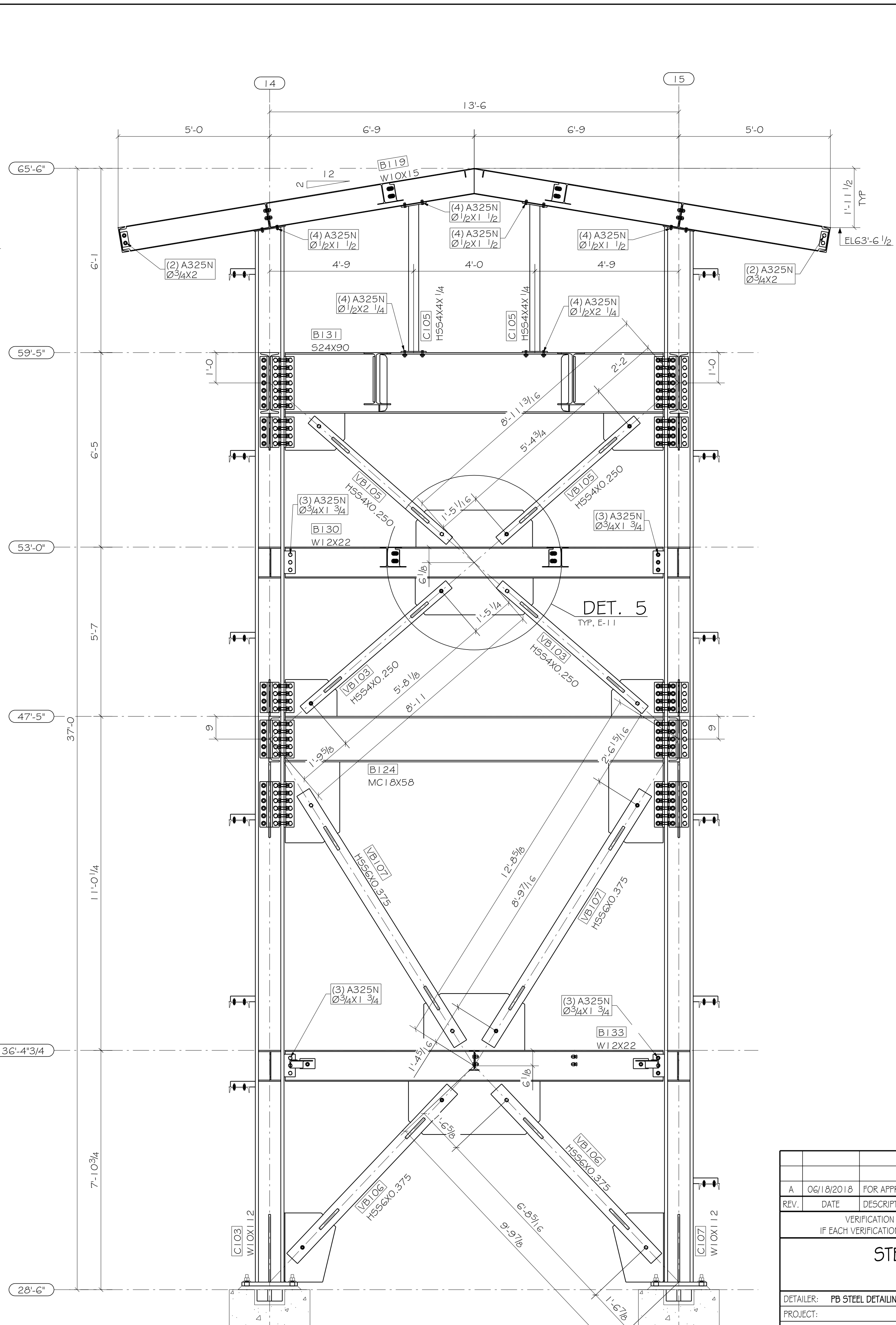


ELEVATION AT GRID K



ELEVATION AT GRID J.4

REV.	DATE	DESCRIPTION	BY
A	06/18/2018	FOR APPROVAL	OZ
VERIFICATION OF DIMENSIONS, DETAILS AND ETC. ARE REQUESTED, WHERE INDICATED. IF EACH VERIFICATION IS NOT NOTED OTHERWISE, IT WILL BE ASSUMED TO BE CORRECT AS SHOWN.			
<b>STEEL MANAGEMENT SERVICES, LLC</b>			
707 COLORADO ST KELSO, WA 98625 360-518-8560			
DETAILER:	PB STEEL DETAILING, INC	ENGINEER:	JHI ENGINEERING, INC
PROJECT:	PELETIZING PLANT		
LOCATION:	300 NORTH PERIN ROAD, WOODLAND, WA 98674		
<b>ELEVATIONS AT GRIDS K AND J.4</b>			
DRAWN BY:	CHKD. BY:	JOB No.:	SHEET No.:
VM	PB	248	E-6
			REV.:
			A